



ONDESE =
The Honey Badger (*Mellivora capensis*)

P. O. Box 6196,
Ausspannplatz 10017 – NAMIBIA
Telephone: + 264 - 61 - 22 08 76
Mobile / WhatsApp / Signal: + 264 - 81 – 163 70 99
E-Mail: info@ondese.com
Website: www.ondese.com

9 B Michaelis Street, Windhoek & Farm Nabatsaub 71, Omaheke

Registered Trade Mark: NA/T/2020/664
Value Added Tax Number: 06 20 4 8-015

YOUR EXPERT FOR SAFARIS IN SUNNY NAMIBIA, BOTSWANA, SOUTH AFRICA AND TO THE VICTORIA FALLS!

Safari Operator since 1993 – 30 Years



BUFFALO SAFARI – 16 DAYS (NAM, BW & ZW)

SAFARI FROM NAMIBIA'S CAPITAL TO THE CENTRAL HIGHLAND, TO ETOSHA NATIONAL PARK, TO THE OVAMBOLAND, THE KAVANGO-WEST REGION, INTO THE BEAUTIFUL ZAMBESI REGION OF THE CAPRIVI STRIP WITH ITS GREAT SOUTHERN AFRICAN RIVERS, ON TO VICTORIA FALLS IN THE ZAMBESI OF ZIMBABWE, THE CHOBE IN BOTSWANA AND BACK VIA THE LUSH KAVANGO-EAST REGION AND THE WATERBERG PLATEAU



Short note about the following itinerary: The services mentioned in brackets are referring to the option **Self-Drive Safari!** The option **Guided Safari** includes all services as specified at the end of the itinerary.

Day 1: Arrival at the Windhoek International Airport in beautiful Namibia. Here you will be welcomed by your **ONDESE** guide or pick up your rented vehicle. Drive via the capital city of Windhoek north to **Immanuel Wilderness Lodge**, situated in a calm environment. Relax here during the afternoon. Overnight here in a room with en-suite facilities. (Dinner, Bed and Breakfast)



Day 2: After breakfast, drive north via Okahandja, Otjiwarongo and Outjo to the edge of the famous Etosha National Park to the **Etosha Safari Lodge**, situated just outside the park. Enjoy an own or guided game-viewing drive in the central part of Etosha. Overnight here in a room with en-suite facilities. (Dinner, Bed and Breakfast)



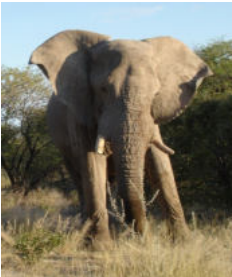
Day 3: Game-viewing drives with your guide or in your own vehicle in the central-western part of Etosha National Park. Accommodation as on the previous day.



Day 4: Game-viewing drives in the central and eastern parts of the Etosha National Park either in your own car rental on the marked roads or on a guided safari with your guide. Visit the historical Fort Namutoni. Overnight in a comfortable tent with en-suite facilities of the **Mushara Bush Camp** outside the park in a private game reserve. (Dinner, Bed and Breakfast)



Day 5: Own or guided game drive in the eastern part of Etosha. Numerous antelope species, giraffe, zebra and their predators, as well as huge, dusty elephant against the backdrop of the seemingly endless Etosha pan mark the days in the park. Accommodation as on the previous day.



Day 6: Your game drive will lead you through Etosha in the morning to the Andoni plains. Exit the park through the King Nehale Gate and drive through the communal area of the Ovamboland with its wide plains dotted with Makalani palms and traditional homesteads. Visit the interesting Nakambale museum at Olukonda. Continue to the **Ongula Village Homestead Lodge**. Overnight here in a room with en-suite facilities. (Activity, Dinner, Bed and Breakfast) During the afternoon, learn more about Ovambo traditions.



Day 7: After breakfast, drive via Eenhana east through the typical tree-savannahs and forests of the Ohangwena Region via Mpungu to the Kavango-West Region and the Okavango river via the regional capital Nkurenkuru and Tondoro close to Rundu.

Overnight outside of town in a chalet with en-suite facilities of the **Hakusembe River Lodge**, situated on the southern bank of the Okavango river. (Dinner, Bed and Breakfast)



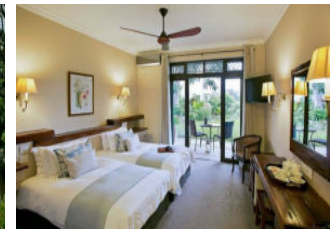
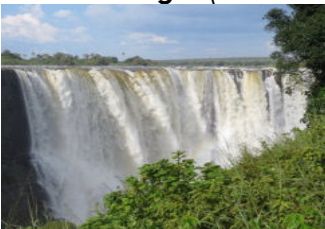
Day 8: Today, drive east via Rundu through the Kavango East Region past traditional homesteads of the Kavango people and via Divundu, the Kavango river and through the Bwabwata National Park to the Zambezi Region in the Caprivi Strip. Continue via the Kwando River, Kongola and Mudumu National Park south via Sangwali to the **Jackalberry Tented Camp**, situated inside the Nkasa Rupara National Park on the Linyanti Swamps in this beautiful part of the northern Kalahari. Overnight here in a luxury tent with en-suite facilities. (Full Board and Activities) Enjoy an afternoon boat cruise on the swamps.



Day 9: During the morning, enjoy a game-viewing drive in an open vehicle in the Nkasa Rupara (formerly Mamili) National Park. You might see hippopotamus, buffalo, elephant, impala, kudu and lion. And a great variety of birds. In the afternoon enjoy a boat cruise in the Linyanti Swamps. Accommodation as on the previous day.



Day 10: Early start via Sangwali, the regional capital of Zambezi, Katima Mulilo, to the border crossing Ngoma into Botswana and via Kasane and the border post Kazungula through the Matetsi Conservancy in Zimbabwe to the town of Victoria Falls. Visit the famous Victoria waterfalls, the "smoke that thunders" and before sundowner enjoy a boat cruise on the mighty Zambezi River. Overnight in a room with en-suite facilities of the **Ilala Lodge**. (Boat Cruise, Dinner, Bed and Breakfast)



Day 11: Today, drive in the course of the morning via Kazungula back to Kasane in Botswana. Here you leave your rented vehicle. Get a boat transfer on the Chobe River from Kasane to the Namibian Caprivi Strip. You are welcomed at the beautiful **Serondela Lodge**. This lodge is situated on the Namibian bank of the Chobe river opposite the famous Chobe National Park of Botswana. Overnight here in a chalet with en-suite facilities. (Full Board and Activities)



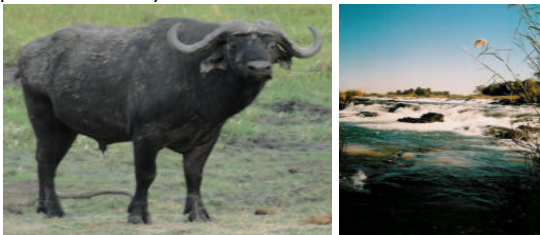
Day 12: Spend the day with boat cruises on the Chobe river while viewing game on the Botswanan bank in the Chobe National Park. You can also view the diverse bird-life. Accommodation as on the previous day.



Day 13: After breakfast you will be brought back with a boat to Kasane where you pick up your vehicle. Drive via Ngoma back to Namibia and on via Katima Mulilo, Kongola and through the Bwabwata National Park of the Caprivi via Divundu to the **Nunda River Lodge** on the bank of the Okavango River at the Popa Rapids. Overnight here in a room or tent with en-suite facilities. (Dinner, Bed and Breakfast)



Day 14: Spend the day with a guided or own game-viewing drive in the beautiful Mahango core area of the Bwabwata National Park where you might encounter game like buffalo, elephant, hippopotamus, roan antelope, sable antelope, red lechwe and reedbuck. You can also visit the Popa Rapids and also enjoy a boat cruise (self-drivers have to settle this directly) on the Okavango. Accommodation as on the previous day.



Day 15: Early start after breakfast via Divundu, Rundu, Mururani and Grootfontein to the world's largest meteorite at Hoba. Continue via Rietfontein to the Waterberg Plateau. Relax at the foot of this red mountain and enjoy the views. Overnight in a chalet with en-suite facilities of the **Waterberg Plateau Lodge**. (Dinner, Bed and Breakfast)



Day 16: Drive via Okahandja and Windhoek to the Windhoek Hosea Kutako International Airport. Return your rented vehicle here or your guide will bid you farewell. Flight home.

Terms and Conditions of ONDESE Safaris® apply!

For your exclusive travel requirements, contact ONDESE Safaris® and follow the adventurous Honey Badger – the finest nose for the best spots in southern Africa since 1993! Your expert partner for tailor-made safaris in sunny Namibia, Botswana, South Africa and to the Victoria Falls!

Namibia Tourism Board Registration Number: TSO00018



Member of:



Business Partners: Friedrich W. Nauhaus & Mendes P. Vinte (Namibians)