



ONDESE =
The Honey Badger (*Mellivora capensis*)

P. O. Box 6196,
Ausspannplatz 10017 – NAMIBIA
Telephone: + 264 - 61 - 22 08 76
Mobile / WhatsApp / Signal: + 264 - 81 - 163 70 99
E-Mail: info@ondese.com
Website: www.ondese.com

9 B Michaelis Street, Windhoek & Farm Nabatsauw 71, Omaheke

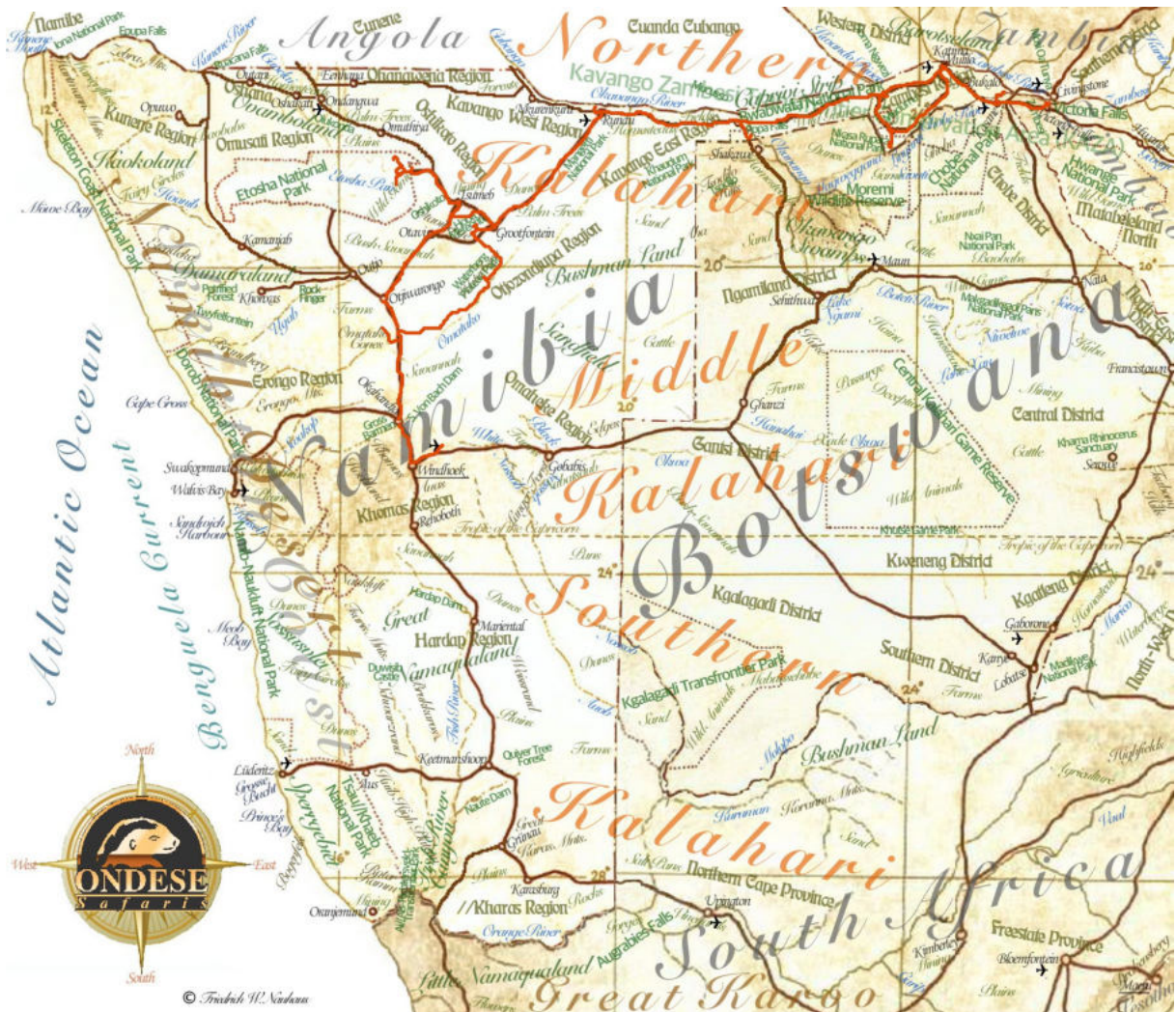
Registered Trade Mark: NA/T/2020/664
Value Added Tax Number: 06 20 4 8-01-75

YOUR EXPERT FOR SAFARIS IN SUNNY NAMIBIA, BOTSWANA, SOUTH AFRICA AND TO THE VICTORIA FALLS!

Safari Operator since 1993 – 30 Years

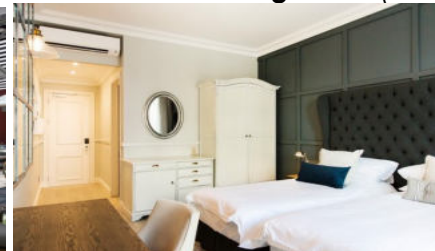
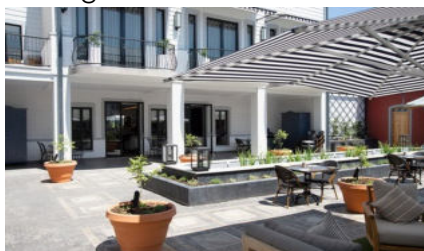


CHEETAH SAFARI – 16 DAYS (NAM, BW & ZW)
SAFARI FROM WINDHOEK IN NAMIBIA VISITING THE WATERBERG, THE KAVANGO REGIONS, THE ZAMBESI REGION OF THE CAPRIVI STRIP, THE VICTORIA FALLS, ETOSHA NATIONAL PARK AND THE CENTRAL BUSHLAND



Short note about the following itinerary: The services mentioned in brackets are referring to the option **Self-Drive Safari!** The option **Guided Safari** includes all services as specified at the end of the itinerary.

Day 1: Arrival at the Windhoek Hosea Kutako International Airport in beautiful Namibia. Pick up your rented vehicle and drive to town. If you are on a guided safari, your **ONDESE** guide will welcome you here and transfer you to town with a city tour. Overnight in an elegant room with en-suite facilities at **The Weinberg Hotel**. (Bed and Breakfast)



Day 2: Drive north via Okahandja to the Waterberg Plateau Park. Here you can undertake relaxing walks in the rest camp and onto the mountain. Overnight outside of the park in a room with en-suite facilities at the **Waterberg Plateau Lodge** at the foot of the mountain. (Dinner, Bed and Breakfast)



Day 3: Drive via Rietfontein to visit the world's largest meteorite on farm Hoba close to Grootfontein. Continue via the veterinary gate Mururani into the northern Kalahari and through the communal lands of the Kavango Regions to Rundu and the **Hakusembe River Lodge**, situated just west of town on the Okavango River. Overnight at here in a chalet with en-suite facilities. (Dinner, Bed and Breakfast)



Day 4: Today, drive east via Rundu through the Kavango East Region past past traditional homesteads of the Kavango people and via Divundu through the Bwabwata National Park to the Zambesi Region in the Caprivi Strip. Continue via the Kwando River, Kongola and Mudumu National Park south via Sangwali to the **Jackalberry Tented Camp**, situated inside the Nkasa Rupara National Park on the Linyanti Swamps in this beautiful part of the northern Kalahari. Overnight here in a luxury tent with en-suite facilities. Enjoy an afternoon boat cruise on the swamps. (Fully inclusive)



Day 5: During the morning, enjoy a game-viewing drive in an open vehicle in the Nkasa Rupara (formerly Mamili) National Park. You might see hippopotamus, elephant, impala, kudu and lion. And a great variety of birds. In the afternoon enjoy a boat cruise in the Linyanti Swamps. Accommodation as on the previous day.



Day 6: After breakfast, drive via Sangwali, the regional capital Katima Mulilo of the Zambesi Region and on via the border crossing Ngoma to Kasane in Botswana. Continue via the border crossing Kazungula to Zimbabwe and through the Matetsi safari area to the town of Victoria Falls. Overnight here in an elegant room with en-suite facilities at the **Ilala Lodge Hotel**, close to the famous "smoke that thunders", the Victoria Falls. (Dinner, Bed and Breakfast)



Day 7: Visit the famous waterfalls, one of the African natural wonders. Enjoy a bridge tour. In the afternoon go on a sundowner boat cruise on the mighty Zambesi River (*these activities are included*). Accommodation as on the previous day.



Day 8: In the course of the morning, drive via Kazungula to the town of Kasane in Botswana. Here you leave your vehicle. Get a boat transfer on the Chobe River from Kasane to the Namibian Caprivi Strip. You are welcomed on the Impalila Island and are accommodated on the houseboat **Chobe Princess**. Overnight here in a cabin with en-suite facilities on this safari-boat. (Full Board and Activities)



Day 9: Spend the day with boat cruises on the Chobe river while viewing game on the Botswanan bank in the Chobe National Park. You can also fish and view the diverse bird-life. Accommodation as on the previous day.



Day 10: After your hosts have transferred you back to Kasane in Botswana, drive via the Ngoma border post back to Namibia and on via Katima Mulilo, Kongola and through the Bwabwata National Park and on via Divundu and the Popa Rapids to the beautiful **Divava Okavango Resort & Spa**, situated on the banks of the Okavango River. Overnight here in a luxury chalet with en-suite facilities. (Dinner, Bed and Breakfast)



Day 11: Enjoy game-viewing drives in your own vehicle (or your guide will take you) in the Mahango part of the Bwabwata National Park. In this treasure of a park you may view animals like elephant, hippopotamus, tsessebe, roan antelope, sable antelope, giraffe, buffalo, crocodile and many birds. When the water level of the river permits, book yourself a boat cruise. Accommodation as previous day.



Day 12: After an early start, drive back via Divundu, Rundu and Grootfontein on to **Guest Farm Ghaub** located in den Otavi mountains. Here you can visit caves or enjoy an afternoon game-viewing drive (*activities have to be booked and paid for directly by self-drivers!*). Otherwise just relax in the beautiful surroundings. Overnight in a room

with en-suite facilities. (Dinner, Bed and Breakfast)



Day 13: Today, your trip leads you via Tsumeb and Lake Oshikoto to the famous Etosha National Park. Game-viewing drive in the eastern side of the park on the marked roads either in your rented vehicle or with your guide. Overnight in a luxury room with en-suite facilities at the **Onguma – The Fort**, situated just outside the park in a private game reserve. (Dinner, Bed and Breakfast)



Day 14: Game-viewing drives in the eastern part of Etosha. Visit historical Fort Namutoni. Large numbers of antelope, giraffe and zebra - and the predators that stalk them, and huge, dusty elephants against the backdrop of the vast Etosha Pan are characteristic of the days in the park. Accommodation as on the previous day.



Day 15: Drive via Tsumeb to Otjiwarongo to visit a Crocodile Ranch and continue to **Mount Etjo Safari Lodge**, situated in a private game estate. Enjoy an afternoon game-viewing drive with your hosts. Overnight here in a room with en-suite facilities. (Dinner, Bed, Breakfast and a Game-viewing Drive)



Day 16: Drive in the course of the morning via Okahandja and the capital Windhoek. Return your rented vehicle at the Hosea Kutako International Airport. Or your guide will bid you farewell at the airport. Flight home.

Terms and Conditions of ONDESE Safaris® apply!

For your exclusive travel requirements, contact **ONDESE Safaris®** and follow the adventurous Honey Badger – the finest nose for the best spots in southern Africa since 1993! Your expert partner for tailor-made safaris in sunny Namibia, Botswana, South Africa and to the Victoria Falls!

Namibia Tourism Board Registration Number: TSO00018



Member of:

Africa's Eden
Tourism Association



Business Partners: Friedrich W. Nauhaus & Mendes P. Vinte (Namibians)