



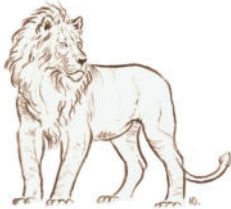
ONDESE =
The Honey Badger (*Mellivora capensis*)

P. O. Box 6196,
Ausspannplatz 10017 – NAMIBIA
Telephone: + 264 - 61 - 22 08 76
Mobile / WhatsApp / Signal: + 264 - 81 - 163 70 99
E-Mail: info@ondese.com
Website: www.ondese.com
9 B Michaelis Street, Windhoek & Farm Nabutsaub 71, Omaheke

Registered Trade Mark: NA/T/2020/664
Value Added Tax Number: 06 20 4 8-015

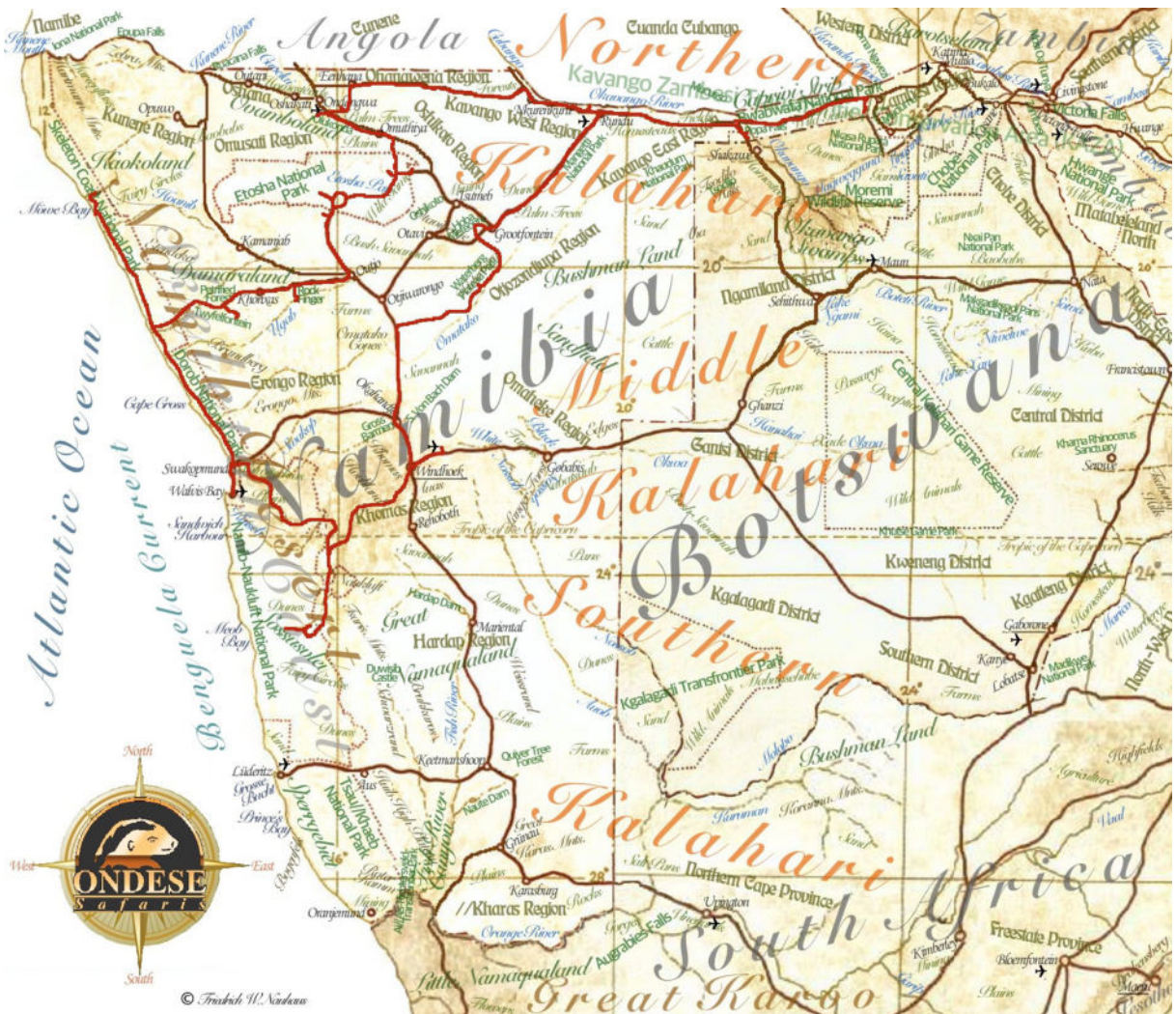
YOUR EXPERT FOR SAFARIS IN SUNNY NAMIBIA, BOTSWANA, SOUTH AFRICA AND TO THE VICTORIA FALLS!

Safari Operator since 1993 – 30 Years



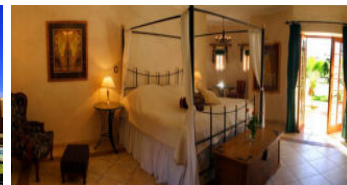
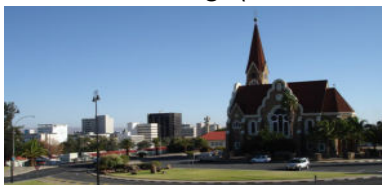
LION SAFARI – 20 DAYS (NAM)

DISCOVER DURING THIS CONTRAST SAFARI IN NAMIBIA THE CAPITAL WINDHOEK, THE NAMIB SAND SEA AT SOSSUSVLEI, THE NAMIB DESERT, THE SKELETON COAST, DAMARALAND, FAMOUS ETOSHA NATIONAL PARK, OVAMBOLAND, THE KAVANGO WEST AND EAST REGIONS, THE LUSH CAPRIVI IN THE ZAMBESI REGION AND THE WATERBERG



Short note about the following itinerary: The services mentioned in brackets are referring to the option **Self-Drive Safari!** The option **Guided Safari** includes all services as specified at the end of the itinerary.

Day 1: Arrival at the Windhoek Hosea Kutako International Airport in beautiful Namibia. Here you will be welcomed by your guide who will bring you to town with a city tour. Or your car rental company will welcome you here and bring you to Windhoek where you pick up your rented vehicle. Overnight in a room with en-suite facilities at the **Hotel Heinitzburg**. (Dinner, Bed and Breakfast)



Day 2: After breakfast, drive through the mountainous Khomas Hochland and down the steep Sreetshoogte pass to the Namib Desert and via Sesriem to the **Kulala Desert Lodge**, situated outside the Namib-Naukluft National Park in an own nature reserve on the dry Tsauchab river. Overnight here in a chalet with en-suite facilities. (Fully Inclusive of all meals and activities)



Day 3: Visit the Namib desert's highest dunes at Sossusvlei, the Namib sand-sea and the interesting Sesriem Canyon. Accommodation as on the previous day.



Day 4: Drive via the Gaub and Kuiseb passes through the Namib-Naukluft Park to the Welwitschia plains and the Moon Landscape. Continue to the charming coastal town of Swakopmund. Overnight in an elegant room with en-suite facilities at **Strand Hotel Swakopmund**. (Bed and Breakfast)



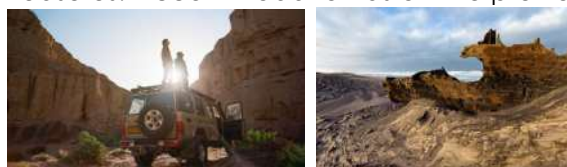
Day 5: Enjoy a boat cruise in the morning on the lagoon of Walvis Bay (included) where you will see interesting ocean-dwellers and spend the rest of the day in Swakopmund. Accommodation as on the previous day.



Day 6: After breakfast, drive along the Skeleton Coast north via Henties Bay, past Cape Cross and via Uchabmund into the Skeleton Coast National Park. Continue via Terra and Terrace Bay to Möwe Bay. Here you will be welcomed and transferred to the stunning and secluded **Shipwreck Lodge**, situated inside the park among Namib dunes. Overnight here in a chalet with en-suite facilities. (Fully Inclusive)



Day 7: Spend the day with your hosts and the offered activities. You will visit some highlights of the Skeleton Coast, the dry Hoarusib valley and you will discover many little treasures. Accommodation as on the previous day.



Day 8: After breakfast, you will be transferred back to your vehicle in Möwe Bay. Drive along the Skeleton Coast and via Terrace Bay and Torra Bay inland through the Namib Desert via Springbockwasser through breathtaking landscapes of the Damaraland to the age-old rock engravings at Twyfelfontein, a world heritage site. Overnight in a chalet with en-suite facilities at **Mowani Mountain Camp**. (Dinner, Bed and Breakfast)



Day 9: Today, drive via the Petrified Forest and the impressive Rock Finger and via Outjo to the famous Etosha National Park and to **Ongava Lodge**, situated outside the park in a private game reserve. Overnight here in a chalet with en-suite facilities. Enjoy a game-viewing drive in Etosha. (Dinner, Bed and Breakfast)



Day 10: Game-viewing drives in the central-western part of Etosha. Accommodation as on the previous day.



Day 11: Game-viewing drives in the central and eastern part of Etosha with your guide. Visit the historical Fort Namutoni. Large numbers of antelope, giraffe and plain-zebra - and the predators that stalk them, and huge, dusty elephants against the backdrop of the vast Etosha Pan are characteristic of the days in the park. Overnight in a stylish room with en-suite facilities at the **Onguma The Fort Lodge**, situated outside the park. (Dinner, Bed and Breakfast)



Day 12: Own or guided game-viewing drives in the eastern part of Etosha National Park. Accommodation as on the previous day.



Day 13: Drive through the eastern part of Etosha while game-viewing and exit the park through the northern King Nehale Gate and continue via Omuthiya through the communal area of the Ovamboland with its wide plains dotted with Makalani palms and traditional homesteads. Visit the interesting Nakambale museum at Olukonda. Continue to the **Ongula Village Homestead Lodge**. Learn more about Ovambo traditions in the homestead. Overnight here in a room with en-suite facilities. (Activity, Dinner, Bed and Breakfast)



Day 14: After breakfast drive, drive north via the regional capital Eenhana and then east through the Ohangwena Region via Mpungu to Kawango-West Region and on via Nkurenkuru along the Okavango River to just west of the city of Rundu. Overnight in a room with en-suite facilities outside the town at **Hakusembe River Lodge**, situated on the bank of the Okavango river. Enjoy an afternoon boat cruise. (Dinner, Bed and Breakfast)



Day 15: Today, you drive east via Rundu through the Kavango East Region past traditional homesteads via Divundu and through the Bwabwata National Park to the Zambesi Region of the Caprivi Strip to **Nambwa Tented Lodge**, situated on the banks of the Kwando River and inside the eastern part of the Bwabwata National Park. Overnight here in a luxury tent with en-suite facilities. (Full Board and Activities on offer)



Day 16: Spend the day with your hosts and the offered game-viewing drive in the Bwabwata National Park and a boat cruise on the Kwando River in this stunning part of the northern Kalahari. Here you may encounter large African game like elephant, buffalo, reedbeek and lion. Accommodation as on the previous day.



Day 17: Today, drive back through the Bwabwata National Park via the Okavango River and Divundu to the beautiful **Divava Okavango Resort & Spa**, situated on the banks of the Okavango River close to the Popa rapids. Overnight here in a luxury chalet with en-suite facilities. (Dinner, Bed and Breakfast)



Day 18: Enjoy game-viewing drives with your guide in the Mahango or Buffalos part of the Bwabwata National Park. In this treasure of a park you may view animals like elephant, hippopotamus, tsessebe, roan antelope, sable antelope, giraffe, buffalo, crocodile and many birds. When the water level of the river permits, book yourself a

boat cruise. Accommodation as previous day.



Day 19: After an early start, drive back via Divundu, Rundu, Mururani and Grootfontein to visit the world's largest meteorite on farm Hoba. Continue via Rietfontein to **Waterberg Plateau Lodge** located on the foot of the red Waterberg Plateau. Here you can spend the afternoon relaxing and with own walks along the mountain. Overnight in a room with en-suite facilities. (Dinner, Bed and Breakfast)



Day 20: In the course of the morning drive via Okahandja to the capital Windhoek. Return your rental vehicle in town and get a transfer to the Hosea Kutako International Airport. Your guide will bid you farewell at the airport. Flight home.

Terms and Conditions of ONDESE Safaris® apply!

For your exclusive travel requirements, contact ONDESE Safaris® and follow the adventurous Honey Badger – the finest nose for the best spots in southern Africa since 1993! Your expert partner for tailor-made safaris in sunny Namibia, Botswana, South Africa and to the Victoria Falls!

Namibia Tourism Board Registration Number: TSO00018



Member of:



Business Partners: Friedrich W. Nauhaus & Mendes P. Vinte (Namibians)